

Library Bookcases



Madison [MM] Style Shown
in Maple Antique Black (ABP) Paint Finish
2-Toned Option with Meadow (O2) Finish Shelves & Back
with V-Groove Back (OVGB) Option

It's all about choice: 1 Type of wood 2 Finish 3 Size 4 Configuration 5 Hardware

Fine Hardwoods Available

CHY - Cherry

MAP - Maple

Oak - Red Oak

QS - Quartersawn
(White Oak)

WAL - Walnut

AK - Rustic Alder

CK - Rustic Cherry

HK - Rustic Hickory

OK - Rustic Oak

Styles Available

CL2 - Classic - Traditional

CL5 - Classic - Shaker

MM - Madison (Fluting)

MN - Madison (No Fluting)

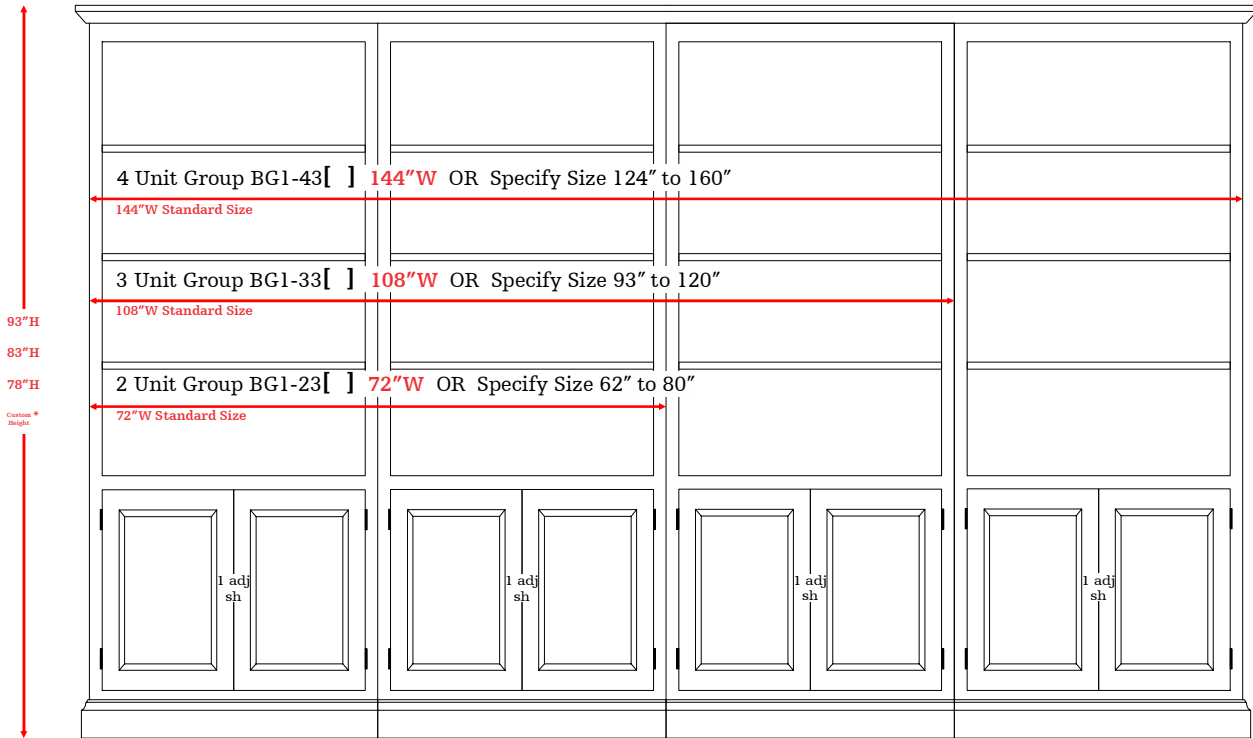
SC - Sierra Crest

VE - Vernalis

One-Piece Library Bookcases

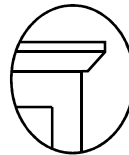
All drawings shown with generic molding and panels

All Dimensions Listed Are Case Dimensions. Overall Dimensions Will Vary Slightly Depending On Selected Style



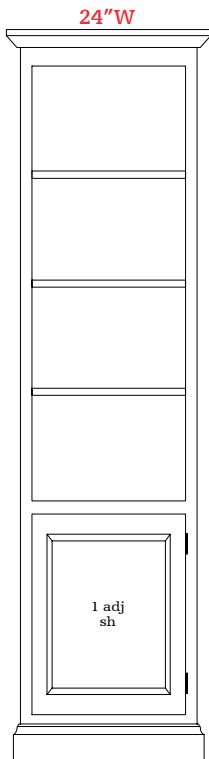
*For taller than 93" see Two-Piece Bookcases

All stated cabinet measurements are the case size. You must allow for trim for overall dimensions. Please keep this in mind while planning your space.

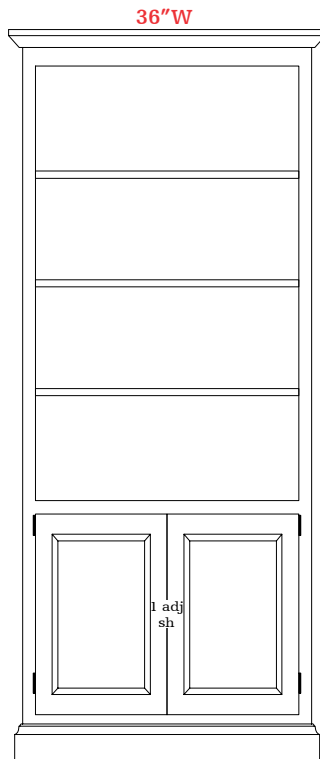


Trim Dimensions*

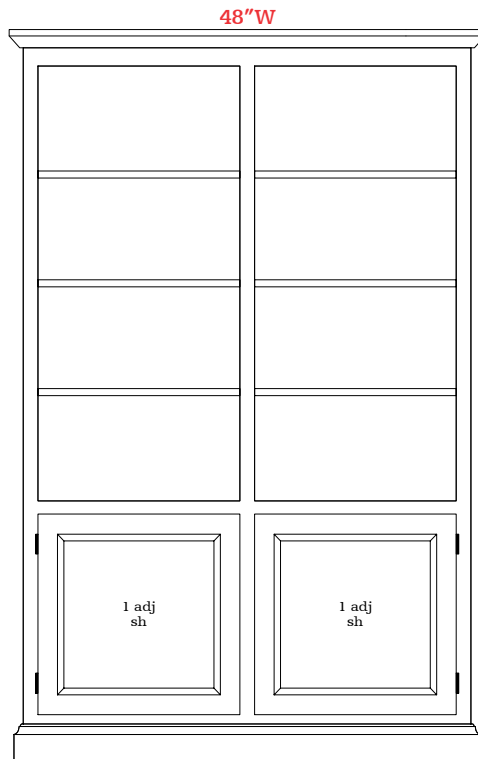
- CL2 & CL5 + 2" Each Side
- MM & MN + 3" Each Side
- SC + 1" Each Side
- VE + 3" Each Side



BS1-2 []



BS1-3 []



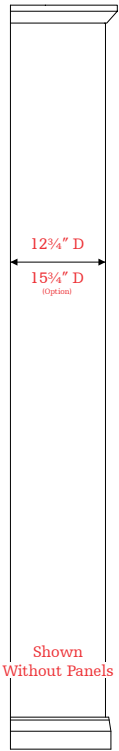
BS1-4 []

One-Piece Library Bookcases

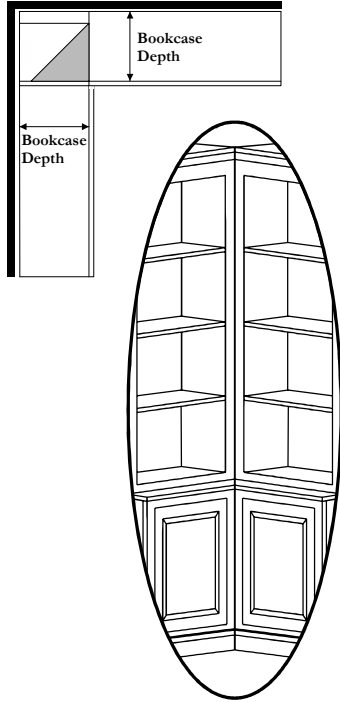
All drawings shown with generic molding and panels

Corner Filler Unit

Can be attached to any unit

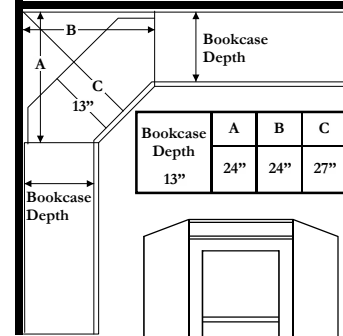


Side View of Library Unit

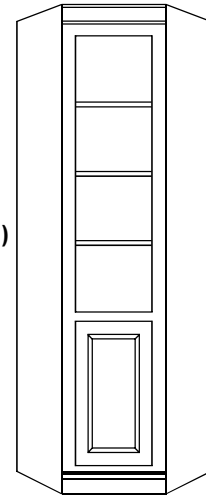


BC1-COR

Corner Bookcases



16" Wide
(At The Front)
&
13" Deep



BC1-CW []

Options Key

<input type="checkbox"/> OWD Wood Shelf Qty ____	<input type="checkbox"/> OGD Glass Shelf Qty ____	For Units Up To 93" Tall Max		<input type="checkbox"/> OPE Paneled End Option	<input type="checkbox"/> OLT Light Box <small>*Specify Custom Light Box Opening Height</small>
<input type="checkbox"/> OVGB V-Groove Back (Per Section)	<input type="checkbox"/> O-LED LED Lights (1-14) Qty ____	<input type="checkbox"/> OLDR Remove Door (Base)	<input type="checkbox"/> OBD2G Glass Door (Base)	<input type="checkbox"/> QTY 	
<input type="checkbox"/> OP3D 15 3/4" Depth	<input type="checkbox"/> Size Modifications Quotes Welcome	<input type="checkbox"/> 24" Units <input type="checkbox"/> 36" Units <input type="checkbox"/> 48" Units	<input type="checkbox"/> 24" Units <input type="checkbox"/> 36" Units <input type="checkbox"/> 48" Units		

Select any of these additional options → Then show where you want options →

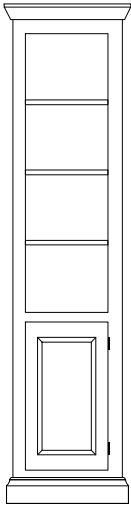
*Option to flush a side is welcome, show on this form where.

Width		Height					Notes							
Wood	Cherry	Maple	Oak	QS Oak	Walnut	Rustic Alder	Rustic Cherry	Rustic Hickory	Rustic Oak	Color	Style	Hardware	Door	Extras
													QTY:	

One-Piece Library Bookcases

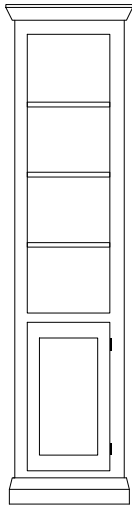
Choose from four styles, available for both one & two piece bookcases.

CL2
Classic - Traditional



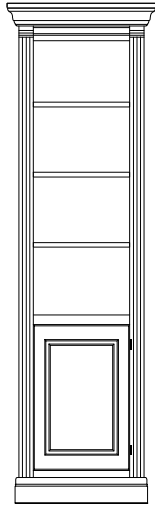
Simple Crown & Base
Raised Panels

CL5
Classic - Shaker



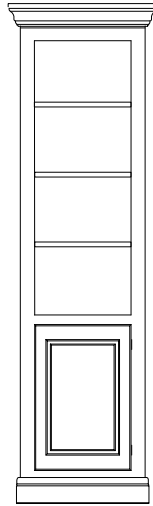
Clean Crown & Base
Recessed Panels

MM
Madison M



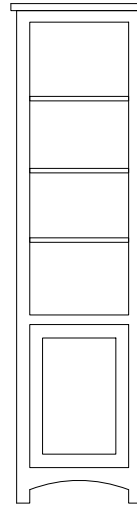
Large Crown
Specialty Raised Panels
Corbels & Fluting

MN
Madison N



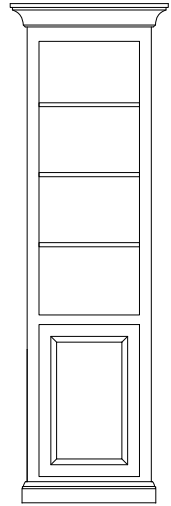
Large Crown
Specialty Raised Panels

SC
Sierra Crest



Open Arched Bottom
Recessed Paneled Doors
Flush Fit Doors

VE
Vernalis



Large Shaped Crown
Beaded Face
Flush Fit Doors



Explore and make a style all your own with our Library Bookcase Program from Stuart David!

Our fine bookcases can be purchased as single, stand-alone units or in multiples to be connected to create an entire wall system. You choose how many you want and the configuration that works best for your space. Creating a custom look for your home or office has never been easier or more fun!