

WOODS & FINISHES

RUSTIC ALDER



BEECH



CHERRY



RUSTIC HICKORY



MAPLE



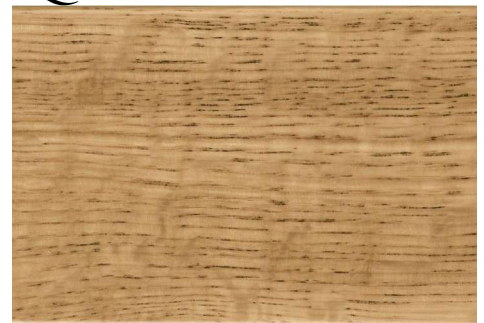
PAINT



RED OAK



QUARTER SAWN OAK



RUSTIC WHITE OAK



AMERICAN WALNUT



RUSTIC ALDER

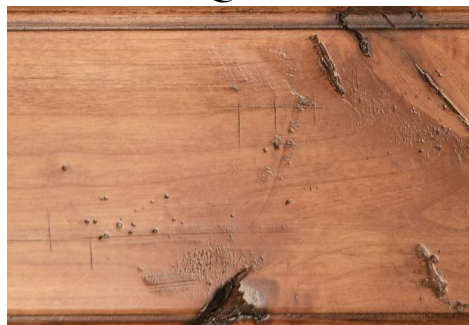
Wood Finishes

Stuart David
Home Furnishings

PRICE CODE: AK

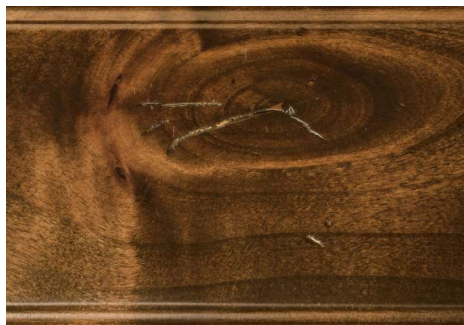
Rustic (Knotty) Alder is a relatively soft hardwood with medium density ranging in color from soft yellow-tans to light browns with reddish hues. Alder is grown in the Pacific Northwest and has a smooth grain similar to Cherry. Our Rustic Alder features split and open knots that vary in shapes, colors and sizes adding wonderful character to your heirloom furniture.

ANTIQUE ALDER



ST-K ST, ST-D, ST-G

CALLAWAY



CC-K CC, CC-D, CC-G

NAKED



NK NK-D, NK-G, NK-K

JACKSON



JK-D JK, JK-G, JK-K

VINTAGE



VN-K VN, VN-D, VN-G

WEATHERED



WA-K WA, WA-D, WA-G

STAIN CODE MARKED **BOLD** SHOWN



EMPIRE HIGH PERFORMANCE MEDIA CONSOLE SHOWN IN
RUSTIC ALDER
HEAVILY DISTRESSED CALLAWAY (CC-K) FINISH

	Standard	Glazed & Distressed	Glazed & Distressed w/out	Glazed & Heavily Distressed
% Upcharge	0	0	0	0
Antique Alder	ST	ST-D	ST-G	ST-K
Callaway	CC	CC-D	CC-G	CC-K
Naked	NK	NK-D	NK-G	NK-K
Jackson	JK	JK-D	JK-G	JK-K
Vintage	VN	VN-D	VN-G	VN-K
Weathered	WA	WA-D	WA-G	WA-K

Standard 2-Tone:

1st Color - All of the body

2nd Color - Top or Top Crown

(wood knobs may also be 2nd color)

All other 2-Toning must be quoted.

2-Toning	% Upcharge
Standard	10

Stain Matching:

Current Stains - \$60 per Order

Contact us to start Stain Return Authorization process.

Allow up to 2 additional weeks to lead time.

Additional Sample Request:

Kiosk Samples - \$20 each + Shipping

Larger Samples (approx 7X9") - \$30 each + Shipping

Wood stain and paint images are shown for reference only and should not be used as the sole source for selecting your furniture finish. They are intended to illustrate the variety and beauty of the wood finishes we offer. To see the true beauty and quality of our finishes firsthand, please visit an authorized dealer location.

BEECH

Wood Finishes

Stuart David
Home Furnishings

PRICE CODE: BEC

NEVADA



7W, 7W-3, 7W-4

SUNSET



SS, SS-3, SS-4

VINTAGE



VN, VN-3, VN-4

STAIN CODE MARKED **BOLD** SHOWN



SHASTA BEDROOM SHOWN IN BEECH - SUNSET (SS) FINISH

% Upcharge	Standard		
	0	10	10
Nevada	7W	7W-3	7W-4
Sunset	SS	SS-3	SS-4
Vintage	VN	VN-3	VN-4

Standard 2-Tone:

1st Color - All of the body
2nd Color - Top or Top Crown
(wood knobs may also be 2nd color)

All other 2-Toning must be quoted.

2-Toning		% Upcharge
Standard		10
Glazed & Distressed (3)		12
Glazed w/out Distressing (4)		12

Stain Matching:

Current Stains - \$60 per Order

Contact us to start Stain Return Authorization process.

Allow up to 2 additional weeks to lead time.

Additional Sample Request:

Kiosk Samples - \$20 each + Shipping

Larger Samples (approx 7X9") - \$30 each + Shipping

Wood stain and paint images are shown for reference only and should not be used as the sole source for selecting your furniture finish. They are intended to illustrate the variety and beauty of the wood finishes we offer. To see the true beauty and quality of our finishes firsthand, please visit an authorized dealer location.

CHERRY

Wood Finishes

Stuart David
Home Furnishings

PRICE CODE: CHY

Cherry is a smooth-grained, reddish-brown hardwood known for its pitch marks (worm holes), mineral streaks and beautiful patina aging process. The patina/darkening process is most rapid during its first year and continues as it is exposed to light creating the richness cherry is so prized for. It is considered a medium hardwood most prevalent in the northeastern States derived from American Black Cherry fruit trees.

CHERRY AUTUMN



CA, CA-3, CA-4

NEWMAN



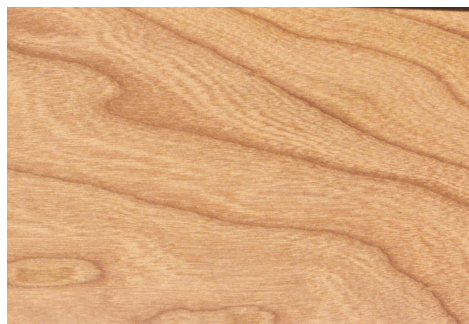
NM, NM-3, NM-4

SUMMER



SR, SR-3, SR-4

SUNSET



SS

SWEETWATER



SW, SW-3, SW-4

TIMBER



TM, TM-3, TM-4

VINTAGE



VN, VN-3, VN-4

STAIN CODE MARKED **BOLD** SHOWN

ALL CHERRY STAINS AVAILABLE ON RUSTIC CHERRY

PRICE CODE: CK

COPPER CREEK NIGHTSTAND
SHOWN IN RUSTIC CHERRY
DISTRESSED VINTAGE (VN-3) FINISH



Stain Matching:

Current Stains - \$60 per Order

Contact us to start Stain Return Authorization process.
Allow up to 2 additional weeks to lead time.

Additional Sample Request:

Kiosk Samples - \$20 each + Shipping
Larger Samples (approx 7X9") - \$30 each + Shipping

Wood stain and paint images are shown for reference only and should not be used as the sole source for selecting your furniture finish. They are intended to illustrate the variety and beauty of the wood finishes we offer. To see the true beauty and quality of our finishes firsthand, please visit an authorized dealer location.

Standard 2-Tone:

1st Color - All of the body

2nd Color - Top or Top Crown

(wood knobs may also be 2nd color)

All other 2-Toning must be quoted.

	Standard	Glazed & Distressed	Glazed w/out Distressing
% Upcharge	0	10	10
Cherry Autumn	CA	CA-3	CA-4
Newman	NM	NM-3	NM-4
Summer	SR	SR-3	SR-4
Sunset (Natural)	SS		
Sweetwater	SW	SW-3	SW-4
Timber	TM	TM-3	TM-4
Vintage	VN	VN-3	VN-4

2-Toning	% Upcharge
Standard	10
Glazed & Distressed (3)	12
Glazed w/out Distressing (4)	12

RUSTIC HICKORY

Wood Finishes

Stuart David
Home Furnishings

PRICE CODE: HK

Of our Rustic woods, Hickory has the most character with knots, mineral streaks, a coarse texture with a wide range of color variation from reddish brown, tan-brown to white sometimes having a striped appearance. Rustic Hickory is strong, dense, durable and the hardest wood we work with. Hickory is typically found in the Pennsylvania region.

CABIN



CB-K, CB, CB-D, CB-G

CINNAMON



CN-K, CN, CN-D, CN-G

RECLAIMED



RC-K, RC, RC-D, RC-G

VINTAGE



VN-K, VN, VN-D, VN-G

STAIN CODE MARKED **BOLD** SHOWN



ASHBY WALL BED
SHOWN IN
RUSTIC HICKORY
HEAVILY DISTRESSED CABIN (CB-K) FINISH

Stain Matching:

Current Stains - \$60 per Order

Contact us to start Stain Return Authorization process.

Allow up to 2 additional weeks to lead time.

Additional Sample Request:

Kiosk Samples - \$20 each + Shipping

Larger Samples (approx 7X9") - \$30 each + Shipping

Standard 2-Tone:

1st Color - All of the body

2nd Color - Top or Top Crown

(wood knobs may also be 2nd color)

All other 2-Toning must be quoted.

	Standard	Glazed & Distressed	Glazed w/out Distressing	Glazed & Heavily Distressed
% Upcharge	0	0	0	0
Cabin	CB	CB-D	CB-G	CB-K
Cinnamon	CN	CN-D	CN-G	CN-K
Reclaimed	RC	RC-D	RC-G	RC-K

2-Toning	% Upcharge
Standard	10

Wood stain and paint images are shown for reference only and should not be used as the sole source for selecting your furniture finish. They are intended to illustrate the variety and beauty of the wood finishes we offer. To see the true beauty and quality of our finishes firsthand, please visit an authorized dealer location.

MAPLE

Wood Finishes

Maple is fine textured and has a close, straight grain and is creamy white in color with a slight reddish brown tinge. It grows most prevalently in the Mid-Atlantic and Lake states. Maple takes stain and paint beautifully with bright and pleasant overall finish.

MAPLE - SELECT

DESERT



TD

TOAST



TT, TT-3, TT-4

MAPLE

DEER CREEK



DC, DC-3, DC-4

DRIFTWOOD



DW, DW-3, DW-4

IDAHO



ID, ID-3, ID-4

JACKSON



JK, JK-3, JK-4

MEADOW



02, 02-3, 02-4

NEWMAN



NM, NM-3, NM-4

SAND



SD, SD-3, SD-4

TANGO



06, 06-3, 06-4

VINTAGE



VN, VN-3, VN-4

STAIN CODE MARKED **BOLD** SHOWN



HOME OFFICE SHOWN IN
SELECT MAPLE - DISTRESSED TOAST (TT-3) FINISH

	Select	Select, Glazed & Distressed	Select, Glazed w/out Distressing
Select % Upcharge	10	20	20
Desert	TD		
Toast	TT	TT-3	TT-4

	Standard	Glazed & Distressed	Glazed w/out Distressing
% Upcharge	0	10	10
Deer Creek	DC	DC-3	DC-4
Driftwood	DW	DW-3	DW-4
Idaho	ID	ID-3	ID-4
Jackson	JK	JK-3	JK-4
Meadow	02	02-3	02-4
Newman	NM	NM-3	NM-4
Sand	SD	SD-3	SD-4
Tango	06	06-3	06-4
Vintage	VN	VN-3	VN-4

Standard 2-Tone:
1st Color - All of the body
2nd Color - Top or Top Crown
 (wood knobs may also be 2nd color)
All other 2-Toning must be quoted.

Select 2-Toning	% Upcharge
Select	10
Select Glazed & Distressed (3)	20
Select Glazed w/out Distressing (4)	20

2-Toning	% Upcharge
Standard	10
Glazed & Distressed (3)	12
Glazed w/out Distressing (4)	12

Stain Matching:

Current Stains - \$60 per Order
 Contact us to start Stain Return Authorization process.
 Allow up to 2 additional weeks to lead time.

Additional Sample Request:

Kiosk Samples - \$20 each + Shipping
 Larger Samples (approx 7X9") - \$30 each + Shipping

Wood stain and paint images are shown for reference only and should not be used as the sole source for selecting your furniture finish. They are intended to illustrate the variety and beauty of the wood finishes we offer. To see the true beauty and quality of our finishes firsthand, please visit an authorized dealer location.

PAINT

Wood Finishes

SWISS COFFEE



PNW-B

ANTIQUED SWISS COFFEE



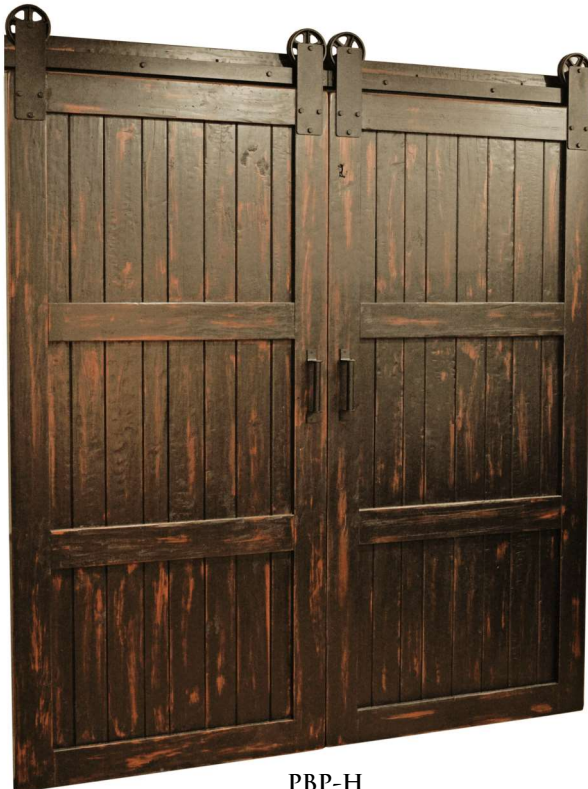
PNW-A

HEAVILY DISTRESSED SWISS COFFEE



PNW-H

HEAVILY DISTRESSED BLACK



PBP-H

BLACK



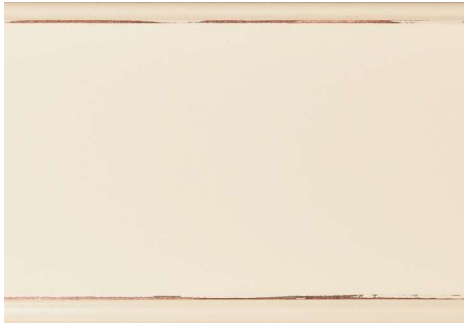
PBP-B

ANTIQUED BLACK



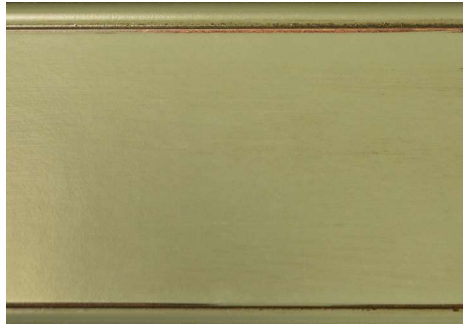
PBP-A

OFF-WHITE



PWP-B, **PWP-A**, PWP-H

ACAPULCO GREEN



PGP-B, **PGP-A**, PGP-H

AQUA BLUE



PAB-B, **PAB-A**, PAB-H

CALM GREY



PSL-B, **PSL-A**, PSL-H

CANDY APPLE RED



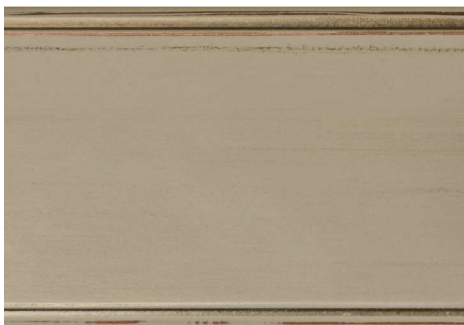
PRC-B, **PRC-A**, PRC-H

NAVY BLUE



PNB-B, **PNB-A**, PNB-H

SMOKED GREY



PSG-B, **PSG-A**, PSG-H

STAIN CODE MARKED **BOLD** SHOWN

BOOKCASE SHOWN IN
2-TONED PAINT FINISH
ANTIQUE CANDY APPLE RED (PRC-A)
AND
RED OAK
ANTIQUE OAK (AO) FINISH



Stain Matching:

Current Stains - \$60 per Order
Contact us to start Stain Return Authorization process.
Allow up to 2 additional weeks to lead time.

Additional Sample Request:

Kiosk Samples - \$20 each + Shipping
Larger Samples (approx 7X9") - \$30 each + Shipping

Wood stain and paint images are shown for reference only and should not be used as the sole source for selecting your furniture finish. They are intended to illustrate the variety and beauty of the wood finishes we offer. To see the true beauty and quality of our finishes firsthand, please visit an authorized dealer location.

	Solid Paint	Antiqued Paint	Heavily Distressed Paint
% Upcharge	10	10	15
Swiss Coffee	PNW-B	PNW-A	PNW-H
Black	PBP-B	PBP-A	PBP-H
Off-White	PWP-B	PWP-A	PWP-H
Acapulco Green	PGP-B	PGP-A	PGP-H
Aqua Blue	PAB-B	PAB-A	PAB-H
Calm Grey	PSL-B	PSL-A	PSL-H
Candy Apple Red	PRC-B	PRC-A	PRC-H
Navy Blue	PNB-B	PNB-A	PNB-H
Smoked Grey	PSG-B	PSG-A	PSG-H

Standard 2-Tone:

1st Color - All of the body
2nd Color - Top or Top Crown
(wood knobs may also be 2nd color)
All other 2-Toning must be quoted.

2-Toning	% Upcharge
Solid Paint	12
Antiqued Paint (A)	12
Heavily Distressed Paint (H)	17

RED OAK

Wood Finishes

Red Oak is the most abundant wood species growing in the Eastern United States. It has a pinkish-reddish brown color way with a coarse texture and mostly straight grain. A classic American hard, dense and durable wood.

ANTIQUE OAK



AO, AO-3, AO-4

DRIFTWOOD



DW, DW-3, DW-4

IDAHO



ID, ID-3, ID-4

JACKSON



JK, JK-3, JK-4

NAKED



NK, NK-3, NK-4

OLD WORLD



88, 88-3, 88-4

VINTAGE



VN, VN-3, VN-4

WEATHERED



WA, WA-3, WA-4

WYOMING



WY, WY-3, WY-4

WEATHERED GREY



WG-3



RILEY ENTERTAINMENT SHOWN IN RED OAK - DISTRESSED VINTAGE (VN-3) FINISH

	Standard	Glazed & Distressed	Glazed w/out Distressing
% Upcharge	0	10	10
Antique Oak	AO	AO-3	AO-4
Driftwood	DW	DW-3	DW-4
Idaho	ID	ID-3	ID-4
Jackson	JK	JK-3	JK-4
Naked	NK	NK-3	NK-4
Old World	88	88-3	88-4
Vintage	VN	VN-3	VN-4
Weathered	WA	WA-3	WA-4
Weathered Grey	WG	WG-3	WG-4
Wyoming	WY	WY-3	WY-4

Standard 2-Tone:
1st Color - All of the body
2nd Color - Top or Top Crown
 (wood knobs may also be 2nd color)
All other 2-Toning must be quoted.

2-Toning	% Upcharge
Standard	10
Glazed & Distressed (3)	12
Glazed w/out Distressing (4)	12

Stain Matching:

Current Stains - \$60 per Order
Contact us to start Stain Return Authorization process.
 Allow up to 2 additional weeks to lead time.

Additional Sample Request:

Kiosk Samples - \$20 each + Shipping
 Larger Samples (approx 7X9") - \$30 each + Shipping

Wood stain and paint images are shown for reference only and should not be used as the sole source for selecting your furniture finish. They are intended to illustrate the variety and beauty of the wood finishes we offer. To see the true beauty and quality of our finishes firsthand, please visit an authorized dealer location.

QUARTER SAWN WHITE OAK

Stuart David
Home Furnishings

Wood Finishes

PRICE CODE: **QS**

Quarter Sawn White Oak is named for the angle in which it is cut distinguishing it from your traditional oak furniture. The cut gives its distinguished tiger-ray grain pattern often used on mission style furniture. White Oak is a hard and strong Northeastern American wood used to build furniture that stands the test of time.

ANTIQUE OAK



AO, AO-3, AO-4

OLD WORLD



88, 88-3, 88-4

RECLAIMED



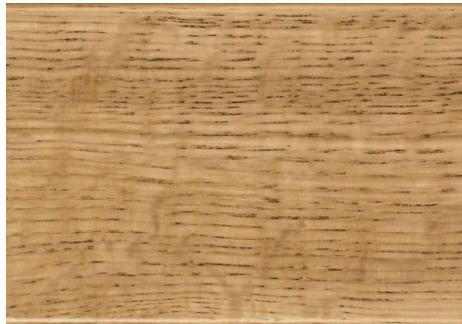
RC, RC-3, RC-4

VINTAGE



VN, VN-3, VN-4

WEATHERED



WA, WA-3, WA-4

STAIN CODE MARKED **BOLD** SHOWN

WYOMING



WY, WY-3, WY-4



COPPER CREEK MEDIA CONSOL SHOWN IN
QUARTER SAWN WHITE OAK - DISTRESSED WEATHERED (WA-3) FINISH

	Standard	Glazed & Distressed	Glazed w/out Distressing
% Upcharge	0	10	10
Antique Oak	AO	AO-3	AO-4
Old World	88	88-3	88-4
Reclaimed	RC	RC-3	RC-4
Vintage	VN	VN-3	VN-4
Weathered	WA	WA-3	WA-4
Wyoming	WY	WY-3	WY-4

Standard 2-Tone:

1st Color - All of the body

2nd Color - Top or Top Crown

(wood knobs may also be 2nd color)

All other 2-Toning must be quoted.

2-Toning	% Upcharge
Standard	10
Glazed & Distressed (3)	12
Glazed w/out Distressing (4)	12

Stain Matching:

Current Stains - \$60 per Order

Contact us to start Stain Return Authorization process.

Allow up to 2 additional weeks to lead time.

Additional Sample Request:

Kiosk Samples - \$20 each + Shipping

Larger Samples (approx 7X9") - \$30 each + Shipping

Wood stain and paint images are shown for reference only and should not be used as the sole source for selecting your furniture finish. They are intended to illustrate the variety and beauty of the wood finishes we offer. To see the true beauty and quality of our finishes firsthand, please visit an authorized dealer location.

RUSTIC WHITE OAK

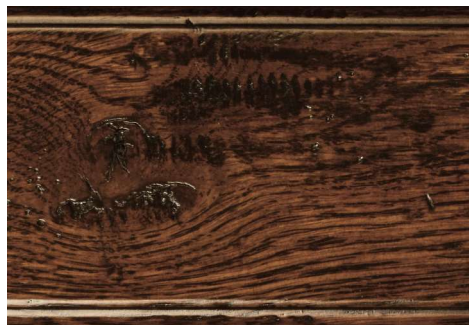
Wood Finishes

Stuart David
Home Furnishings

PRICE CODE: OK

White Oak is a strong, hard, heavy Northeastern American wood. It has more figure and longer rays than red oak with a distinctive open grain and medium-coarse texture. Our Rustic White Oak has a lot of character and takes stain bright and beautifully.

OLD WORLD



88-K, 88, 88-D, 88-G

RECLAIMED



RC-K, RC, RC-D, RC-G

VINTAGE



VN-K, VN, VN-D, VN-G

WEATHERED



WA-K, WA, WA-D, WA-G

WEATHERED GREY



WG-K, WG, WG-D, WG-G

HOME OFFICE SHOWN IN
RUSTIC WHITE OAK - RECLAIMED (RC) FINISH



STAIN CODE MARKED **BOLD** SHOWN

	Standard	Glazed & Distressed	Glazed w/out Distressing	Glazed & Heavily Distressed
% Upcharge	0	0	0	0
Old World	88	88-D	88-G	88-K
Reclaimed	RC	RC-D	RC-G	RC-K
Vintage	VN	VN-D	VN-G	VN-K
Weathered	WA	WA-D	WA-G	WA-K
Weathered Grey	WG	WG-D	WG-G	WG-K

Standard 2-Tone:

1st Color - All of the body

2nd Color - Top or Top Crown
(wood knobs may also be 2nd color)

All other 2-Toning must be quoted.

2-Toning	% Upcharge
Standard	10

Stain Matching:

Current Stains - \$60 per Order

Contact us to start Stain Return Authorization process.

Allow up to 2 additional weeks to lead time.

Additional Sample Request:

Kiosk Samples - \$20 each + Shipping

Larger Samples (approx 7X9") - \$30 each + Shipping

Wood stain and paint images are shown for reference only and should not be used as the sole source for selecting your furniture finish. They are intended to illustrate the variety and beauty of the wood finishes we offer. To see the true beauty and quality of our finishes firsthand, please visit an authorized dealer location.

AMERICAN WALNUT

Wood Finishes

Stuart David
Home Furnishings

PRICE CODE: WAL

American Walnut is a class of hardwood all its own completely unique to North America. Its natural color range is wide with creamy whites to light browns to dark chocolate browns and sometimes with purplish streaks throughout. This wood has both straight and curly grain patterns making it very attractive, full of character and uniquely one of a kind. It is tough and will stand the test of time.

NATURAL



NW

DEER CREEK



DC



SIERRA VISTA MASTER CHEST SHOWN IN WALNUT - NATURAL (NW) FINISH

Stain Matching:

Current Stains - \$60 per Order

Contact us to start Stain Return Authorization process.

Allow up to 2 additional weeks to lead time.

Additional Sample Request:

Kiosk Samples - \$20 each + Shipping

Larger Samples (approx 7X9") - \$30 each + Shipping

Wood stain and paint images are shown for reference only and should not be used as the sole source for selecting your furniture finish. They are intended to illustrate the variety and beauty of the wood finishes we offer. To see the true beauty and quality of our finishes firsthand, please visit an authorized dealer location.

% Upcharge	
Natural	NW
Deer Creek	DC

Standard 2-Tone:

1st Color - All of the body

2nd Color - Top or Top Crown

(wood knobs may also be 2nd color)

All other 2-Toning must be quoted.

2-Toning	
Standard	10