

# Two Piece Bookcase & Entertainment Program



*It's all about choice:* 1 Type of wood 2 Finish 3 Size 4 Configuration 5 Hardware

## Fine Hardwoods Available

**CHY** - Cherry  
**MAP** - Maple  
**Oak** - Red Oak  
**QS** - Quartersawn  
(White Oak)  
**WAL** - Walnut

**AK** - Rustic Alder  
**CK** - Rustic Cherry  
**HK** - Rustic Hickory  
**OK** - Rustic Oak

## Styles Available

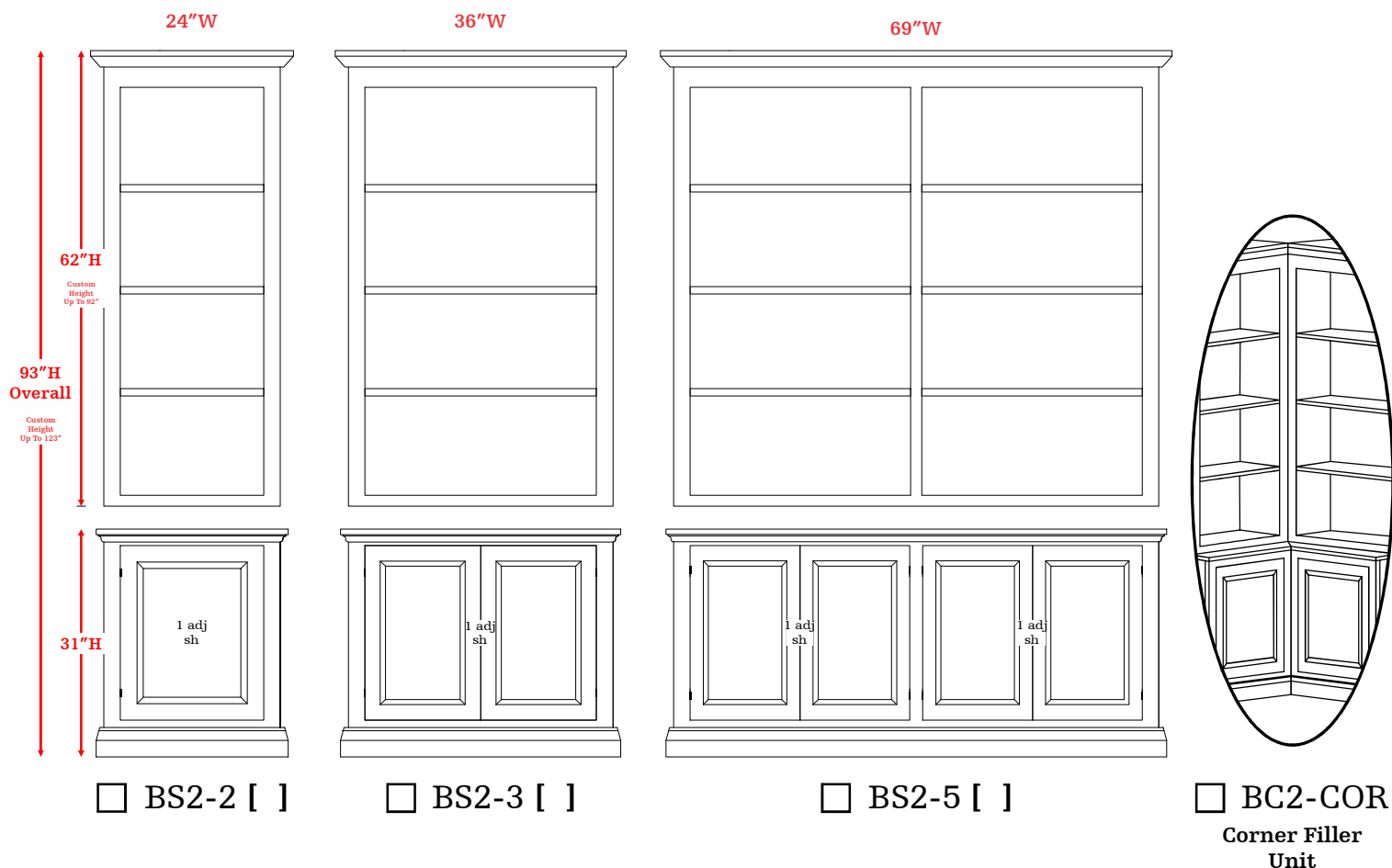
**CL2** - Classic - Traditional  
**CL5** - Classic - Shaker  
**MM** - Madison (Fluting)  
**MN** - Madison (No Fluting)  
**SC** - Sierra Crest  
**VE** - Vernalis

# Two-Piece Bookcases

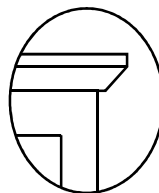
See Back Page For Media Consoles

All drawings shown with generic molding and panels

All Dimensions Listed Are Case Dimensions. Overall Dimensions Will Vary Slightly Depending On Selected Style



All stated cabinet measurements are the case size. You must allow for **trim** for overall dimensions. Please keep this in mind while planning your space.

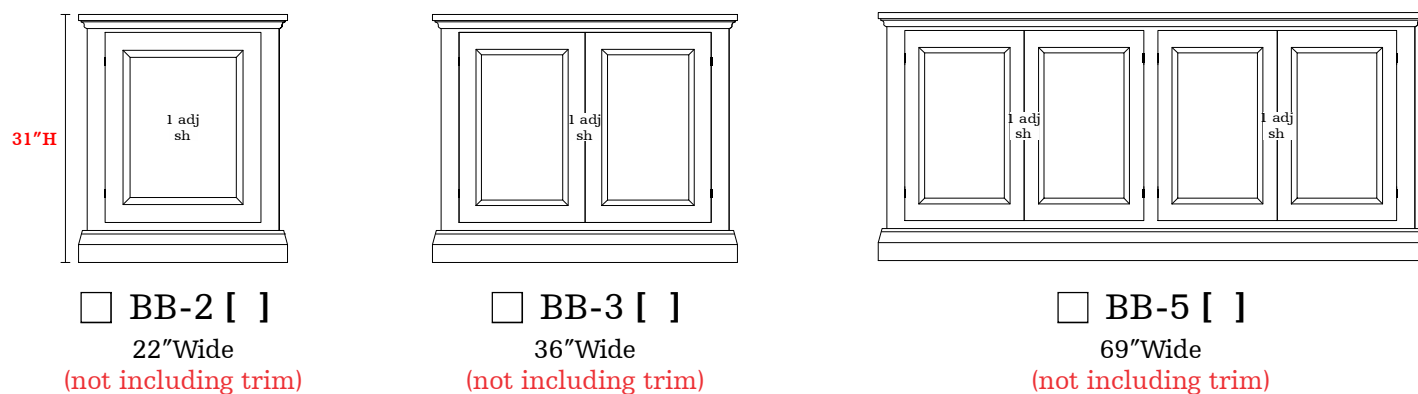


## Trim Dimensions

CL2 & CL5 + 2\" Each Side  
MM & MN + 3\" Each Side  
SC + 1\" Each Side  
VE + 3\" Each Side

## Base Units Without Upper

Select One Of These If No Upper Is Wanted

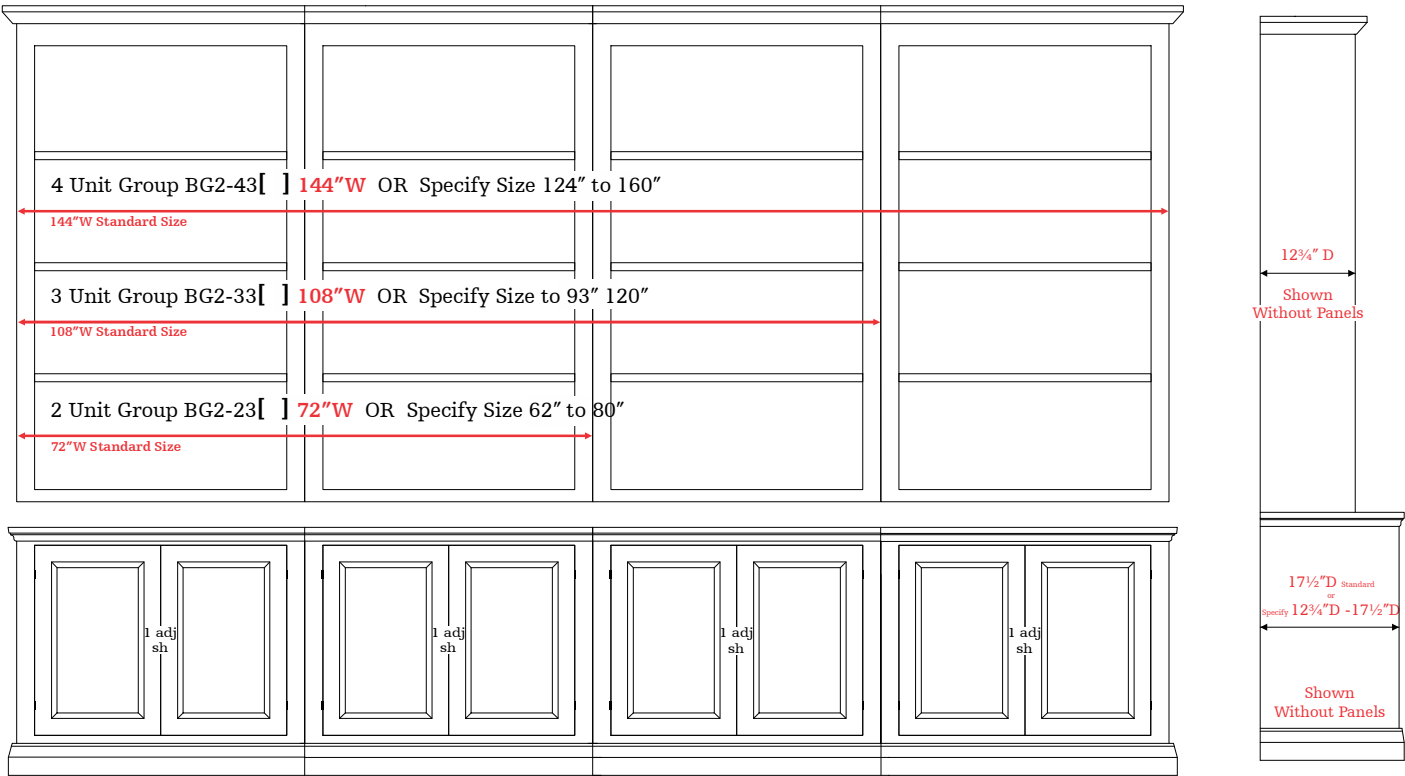


See Back Page For Media Consoles

All drawings shown with generic molding and panels

Two-Piece Bookcases

All Dimensions Listed Are Case Dimensions. Overall Dimensions Will Vary Slightly Depending On Selected Style



Also available as one piece units : ☐ BG1-23 62" to 80" ☐ BG1-33 93" to 120" (not including trim) ☐ BG1-43 124" to 160"

Side View of 2 Piece Unit

Options Key			
<input type="checkbox"/> <b>OWD</b> Wood Shelf Qty _____	<input type="checkbox"/> <b>OGD</b> Glass Shelf Qty _____	<b>For Units Up To 93" Tall Max</b>	
<input type="checkbox"/> <b>OVGB</b> V-Groove Back (Per Section)	<input type="checkbox"/> <b>O-LED</b> LED Lights (1-14) Qty _____	<input type="checkbox"/> <b>Add Wood Door</b>	<input type="checkbox"/> <b>Add Glass Door</b>
<input type="checkbox"/> <b>Remove Door</b> (Base)	<input type="checkbox"/> <b>OBD2G</b> Glass Door (Base)	<b>Paneled End Option</b>	
<input type="checkbox"/> <b>Size Modification</b> (Up To 123" Tall)	<input type="checkbox"/> <b>O3DRW</b> 3 Drawers in Place of Bottom Door (Up To 36" W Units Per Section)	<input type="checkbox"/> <b>OPE2</b> Upper + Base	<input type="checkbox"/> <b>OPE1</b> Base Only
<b>Select any of these additional options</b> Then show where you want options →		<input type="checkbox"/> <b>24" Units</b>	<input type="checkbox"/> <b>24" Units</b>
		<input type="checkbox"/> <b>36" Units</b>	<input type="checkbox"/> <b>36" Units</b>
		<input type="checkbox"/> <b>69" Units</b>	<input type="checkbox"/> <b>69" Units</b>
		<input type="checkbox"/> <b>OLTB</b> Light Box	
		<input type="checkbox"/> <b>OP15</b> Open Bottom Open Section 15"	

\*Option to flush a side is welcome, show on this form where.

Width		Depth		Notes	
Wood	Cherry Maple Oak QS Oak Walnut Rustic Alder Rustic Cherry Rustic Hickory Rustic Oak			Color	Style
Hardware		Door/Drawer		Extras	
QTY:					

# Two-Piece Entertainment Option

GC-(C1-C4)T [ ]

This page is only for the center red portion of example, see inside pages for bookcase selection

42

Choose a size:

☐

62" GC-C\_-62T[ ]

☐

66" GC-C\_-66T[ ]

☐

70" GC-C\_-70T[ ]

93

Option

?



Generic Style Shown With 36"W Side Bookcases For Example

### Steps To Creating Your Custom Media Center

- Measure your space first then decide how wide you want this to be overall
- Decide on the size and configuration of the left and right bookcases on the previous pages
- Choose how wide you want the media console to be from the drawing to the left
- Select the media console configuration from below
- Finally, make your option selection for the ? boxes from below

C1

Option ?

Option ?

Option ?

C2

OPEN

Option ?

Option ?

Option ?

C3

OPEN

Option ?

Option ?

C4

DRAWER

OPEN

DRAWER

Option ?

Option ?

Option ?

66" or 70" Wide Only

Option Selections:

(Write selection on WHITE / GREY boxes)

D

Wood Door  
w/ 1 Adj Shelf

G

Glass Door  
w/ 1 Adj Shelf

K

SPK Door  
w/ 1 Adj Shelf

M

1 - Drawer  
w/ SPK Drop-Door

R

2 - Drawer

M

2 - Drawer  
w/ SPK Drop-Door

R

3 - Drawer

C2 & C4 Only

C1 Only